

# Commodore Plaza

30 West Mashta Drive, Key Biscayne, FL 33149



## Property Information

- Prime Office Space: Private entrance, bathrooms, AC, 24 hour access and ample parking.
- Property is well maintained and in excellent condition.
- Underserved upscale local population.
- Key Biscayne is an island paradise with approximately 22,000 residents during season.
- Over 2 million visitors annually come to Key Biscayne.
- International events & attractions on the Island: ING Marathon, The Miami Seaquarium, Senior PGA Tournament, , Cape Florida State Park and Crandon Park.

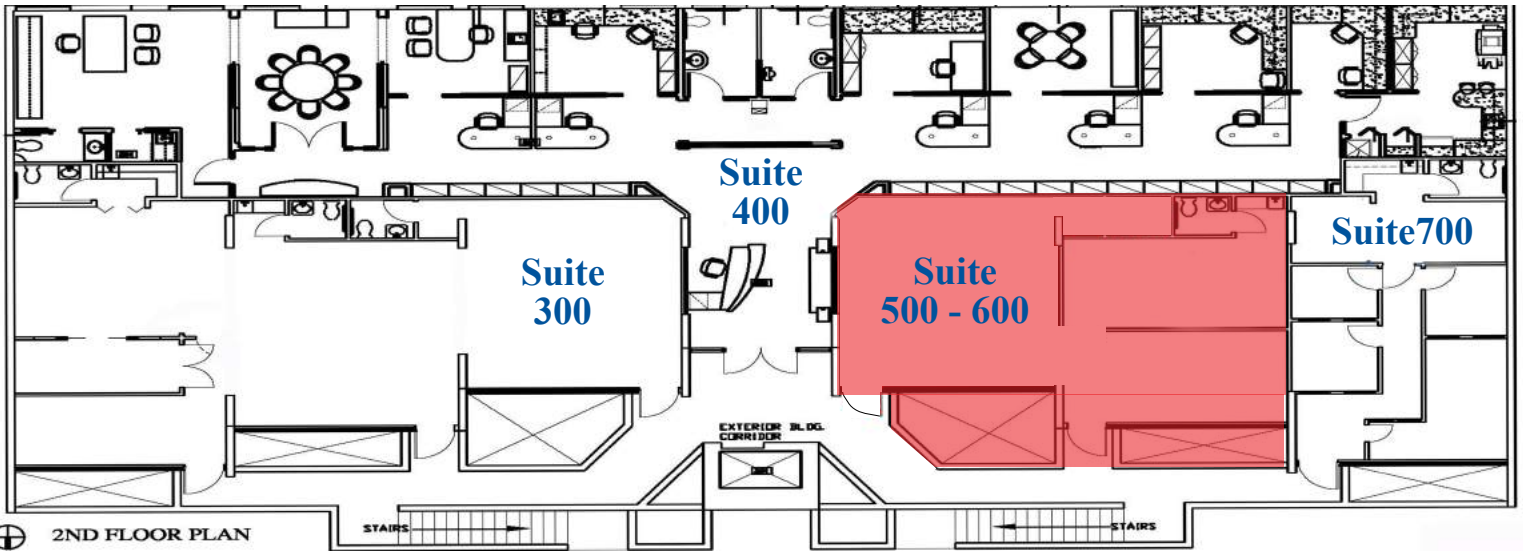
## OFFICE SPACE AVAILABLE

Nicole Christodoulou  
Senior Leasing Associate  
Direct: 305-365-2600x40  
Mobile: 786-252-4596

[Nicole@CommodoreRealty.com](mailto:Nicole@CommodoreRealty.com)

Commodore Realty, Inc.  
30 West Mashta Drive|Suite 400  
Key Biscayne, FL 33149  
Phone:305.365.2600  
Fax:305.365.0800  
[www.CommodoreRealty.com](http://www.CommodoreRealty.com)

# Commodore Plaza Site Plan



## Tenants

Suite	Tenant
300	Dr. Ruben Caride, MDVIP
400	Commodore Realty, INC.
500 - 600	Available 477 - 954 SF
700	XCOAL Energy & Resources

## Demographics

Population	13,019 (2016)
Median Age	42
Average Household Income	\$193,398



## Property Information

Address: 30 West Mashta Drive, Key Biscayne, FL, 33149  
 County: Miami-Dade  
 Total Square Footage: 6,194  
 Number of Tenants: 4  
 Parking Spaces: 25